

High Power Fiber Light Guides

EXFO High Power Fiber Light Guides, supply an equal distribution of light energy to multiple cure sites from a single light source. This new Light Guide technology provides 25% to 50% more throughput than standard fiber guides to give you more energy from your lamp. In addition, these Light Guides offer 25% more output than bifurcated liquid Light Guides and do not require balancing of the legs.



- Higher output power from multi-legged Light Guides that will extend lamp life, ultimately lowering the cost of operating the system
- Never needs replacing, High Power Fiber Light Guides have been tested for over 60,000 hours of exposure with unfiltered light with no degradation
- Transmits wavelengths from 160nm to 1200nm; Extended Range Liquid Light Guides are no longer required

Liquid Light Guides

Available in 3, 5 and 8 mm tip diameters, these Light Guides are an economical choice for light delivery. Standard lengths range from 750 to 3000 mm. Dual and triple-leg configurations are available for multi-site curing. Extended Range Light Guides deliver additional energy in lower wavelengths for tack-free cures.



- Economical system for delivering light to parts
- High throughput
- Custom spot size diameters and lengths available to easily adapt to any assembly process

Light Guide Retort Stand

The Light Guide Retort Stand provides an effective means to precisely fixture your Light Guide. Maintains constant Light Guide position for repeatable cures.

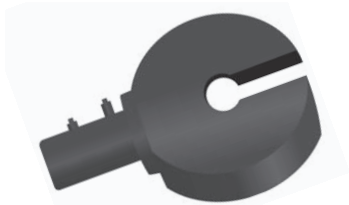
- Fixtures standard Liquid and High Power Fiber Light Guides
- Height adjustment from 0 mm to 150 mm
- Holds various Light Guide diameters including 2, 3, 5 and 8 mm



High Power Fiber Light Guides provide 25% - 50% more throughput than standard Fiber Light Guides

Cure Ring

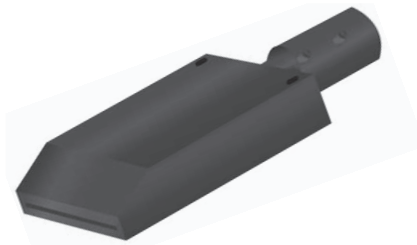
Cure Ring technology provides 360° of curing power from a Light Guide. The standard Cure Ring for use with Liquid Light Guides is available in solid or slotted versions. Cure Rings are ideal for bonding a number of parts that require a 360° cure.



- Available in solid, slotted or hinged versions
- Provides a 360° beam of light
- Couples to standard Liquid Light Guides and High Power Fiber Light Guides

Light Line

The Light Line will convert the Light Guide's spot of light into a focused, linear beam of curing energy. The Light Line efficiently cures small rows of components that require up to two inches of curing length. It also performs tacking and strain relief of multi-strand wiring, as well as edge bonding of displays.



- Couples to EXFO 5mm Liquid and High Power Fiber Light Guides
- Standard, two-inch (5cm) Light Line
- Provides a uniform linear beam of light

High Power Fiber Light Line

The High Power Fiber Light Line utilizes technology with the High Power Fiber Light Guide to provide a high output linear beam of curing energy. The fibers are continuous from the Light Guide input to termination eliminating coupling losses seen with standard Light Line accessories. Ideal for applications such as digital printing where high peak irradiance levels are required.



- Provides a uniform linear beam of light
- Provides 2 to 3 times higher irradiance compared to standard Light Line accessories
- Custom sizes available including multi-legged configurations

Adjustable Collimating Adaptor

The Adjustable Collimating Adaptor is ideal for any application that requires a uniform spot from 1" up to 6" (2.54 to 15.2 cm). The benefit for equal distribution of power will allow the user to cure adhesive evenly without having to compensate for uneven light distribution.



- Couples to all standard Liquid Light Guides
- Available for 3, 5 and 8mm Light Guides
- Includes a collimating lens and the Light Guide holder specific for the Light Guide size



Hinged Cure Ring



Horseshoe Cure Ring



90° Angle Adaptors



Collimating Adaptor



Large Area Focusing Adaptor